



SENSORS & TRANSDUCER SOLUTIONS

I Innovate, Integrate, Elevate.



About Our Company

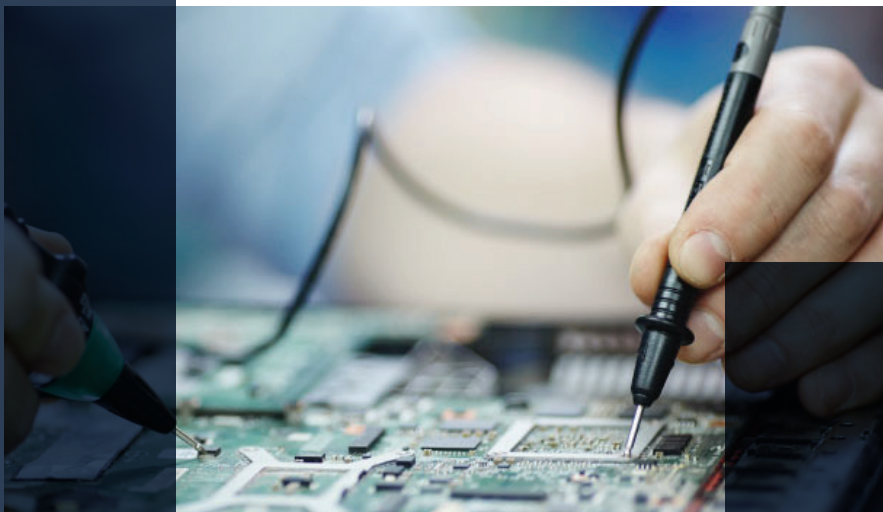
We are headquartered in India and has a team of experienced developers, designers, and engineers who work together to deliver high-quality testing solutions to clients around the world. Here in Abha, we are driven by our passion for technology, aims to offer the best technology could offer and develop most advance & modern testing systems which not only work better even they are most ergonomic systems. We are pioneers in laying out creative and scalable solutions that help in enhancing the productivity of our partner firms to the next level of industrial testing. Our solutions are tailor defined to meet the inherent needs of our clients and all our solutions are focused on the core businesses of our partners.

Our Vision

In the Industry 4.0 era, Abha envisions to be a leader in providing next-generation testing solutions that help organizations embrace Testing Systems. We strive to ensure that our Testing Solutions meet the highest quality and security standards required in this new age of automation and connectivity. We aim to be at the forefront of the testing industry by leveraging advanced technologies such as AI and machine learning to deliver innovative and efficient testing solutions that help our clients optimize their operations and stay ahead of the competition.

Our Mission

Our objective is to transform the testing industry by creating innovative solutions that satisfy the demands of our customers. We are on a quest to challenge and revolutionize the Testing Industry. We deliver testing solutions with best-in-class user experience. Our engineers work smart and design most ergonomic systems which follow the highest industry standards.



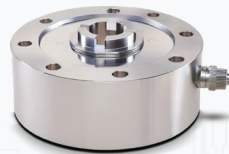
FORCE MEASURING SYSTEMS

Abha is dedicated to offering a wide range of load cells and transducers for all applications related to data collection and processing. Our specialization is not only in matching you with the best load cells for your purpose, but also in integrating those load cells with a specially designed solution on the newest technological platform.

UNIVERSAL TYPE



PAN CAKE TYPE



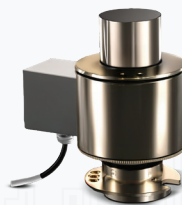
COMPRESSION TYPE



TENSION TYPE



BALL SEATING TYPE



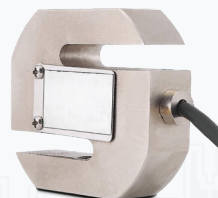
SHEAR BEAM TYPE



BUTTON TYPE



S TYPE

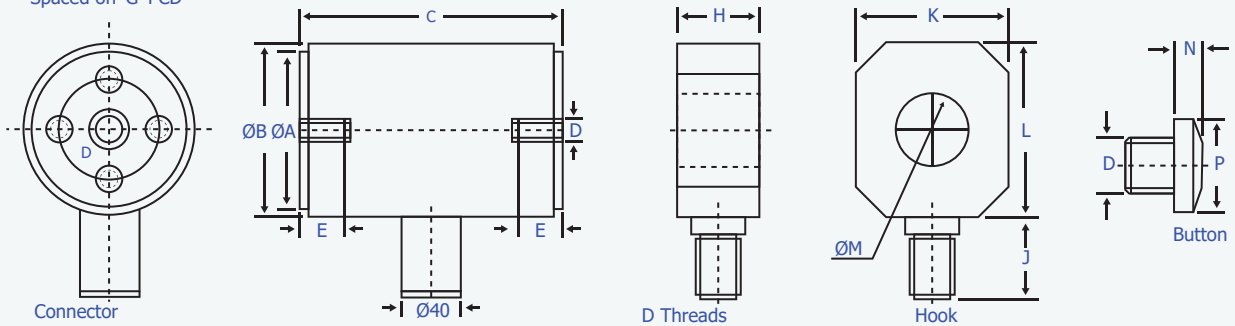


COLUMN CELLS FOR UNIVERSAL LOADS



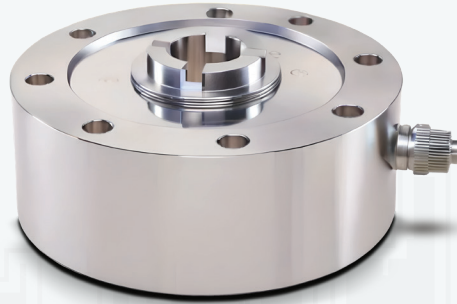
COLUMN CELLS (DRAWING)

4 Holes 'F' Tapped Equally
Spaced on 'G' PCD

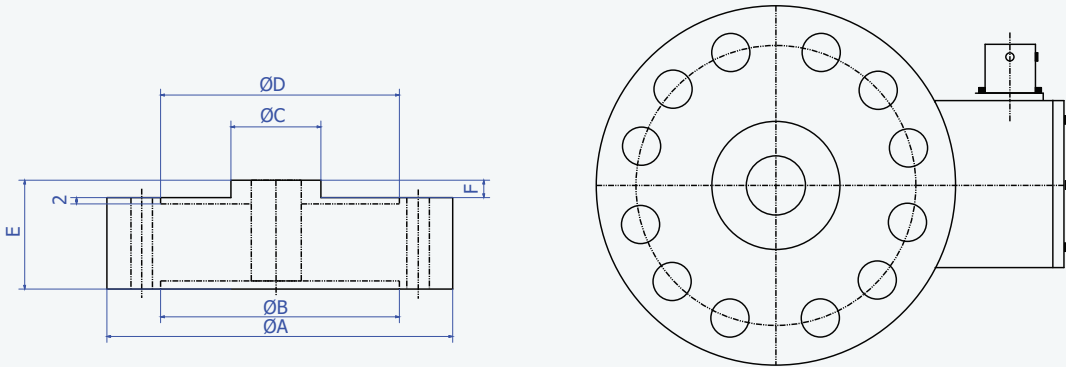


Load cell	All dimensions are in mm													
Capacity	A	B	C	D	E	F	G	H	J	K	L	M	N	P
500 Kg	52	60	100	M16x2P	15	M6	35	24	25	48	65	25	10	30
1 Tonne	52	60	100	M16x2P	15	M6	35	24	25	48	65	25	10	30
2 Tonne	52	60	100	M16x2P	15	M6	35	24	25	48	65	25	10	30
5 Tonne	66	75	130	M26x2P	30	M6	45	30	45	60	80	30	20	40
10 Tonne	88	98	150	M36x3P	40	M8	60	38	55	85	100	40	30	52
20 Tonne	98	112	180	M42x3P	50	M10	75	48	65	98	120	50	40	68

4100 SERIES PAN CAKE / FATIGUE RESISTANT LOAD CELLS



PAN CAKE (DRAWING)

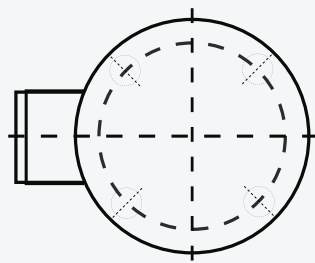


Load cell	All dimensions are in mm									
Capacity	ØA	ØB	ØC	ØD	E	F	H	J	ØK	L
0.5 tonne	110	76	32	76	35	5	M16X2P	8	8.5	90
1 tonne	110	76	32	76	35	5	M16X2P	8	8.5	90
2 tonne	110	76	32	76	35	5	M16X2P	8	8.5	90
5 tonne	120	76	36	76	45	5	M26X2P	12	10.5	90
10 tonne	150	114	55	114	45	5	M36X3P	12	10.5	130
20 tonne	200	144	70	144	60	5	M42X3P	16	13	165
30 tonne	280	204	110	204	90	5	M65X3P	16	17	230
50 tonne	280	204	110	204	90	5	M65X3P	16	17	230

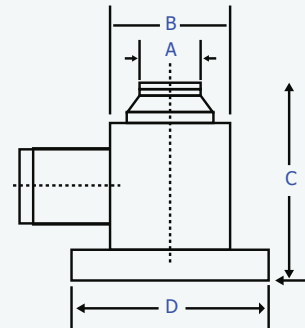
COLUMN CELLS FOR COMPRESSION LOADS



COLUMN CELLS (DRAWING)



4 Holes Ø 'E' Equality
Spaced on 'F' PCD



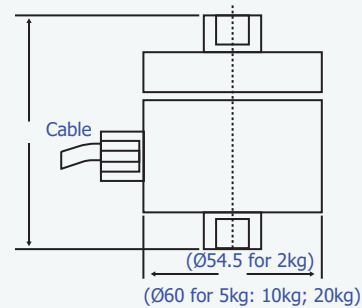
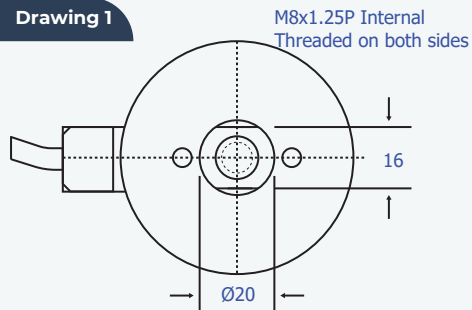
Load cell	All dimensions are in mm					
Capacity	A	B	C	D	E	F
500 Kg	12.5	38	60	66	8.5	54
1 Tonne	12.5	38	60	66	8.5	54
2 Tonne	15	38	60	66	8.5	54
5 Tonne	20	38	60	66	8.5	54
10 Tonne	30	60	90	95	11.0	80
20 Tonne	40	60	90	95	11.0	80
50 Tonne	65	88	120	130	13.0	110
100 Tonne	95	128	155	180	13.0	155

LOW CAPACITY UNIVERSAL LOAD CELLS

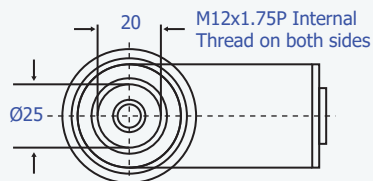
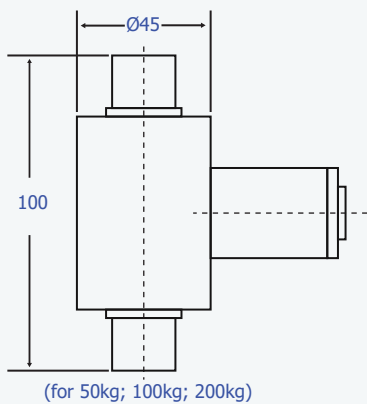


LOW CAPACITY LOADS CELLS (DRAWING)

Drawing 1

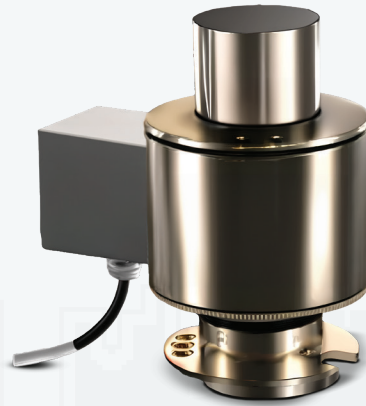


Drawing 2

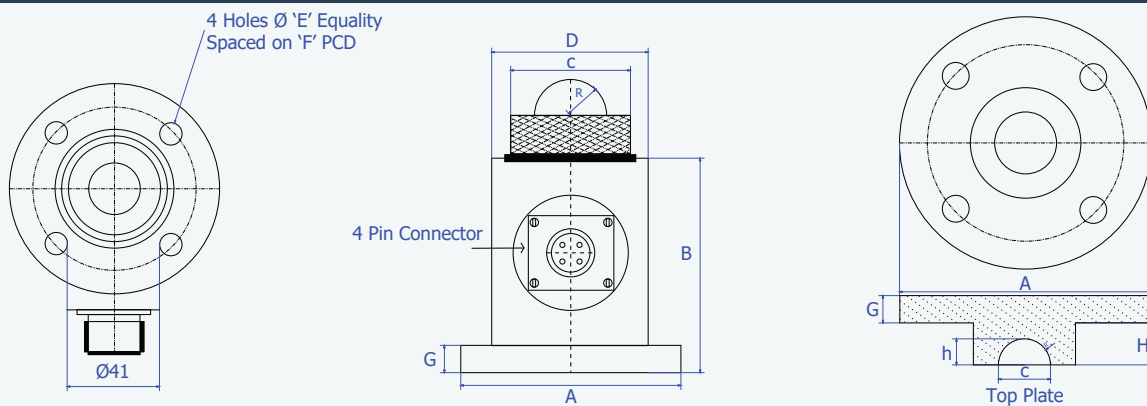


Load cell	Drg. No.
Capacity	A
2Kg	1
5Kg	1
10Kg	1
20Kg	1
50Kg	2
100Kg	2
200Kg	2

BALL SEATING CELLS FOR COMPRESSION LOADS



BALL SEATING LOAD CELLS (DRAWING)

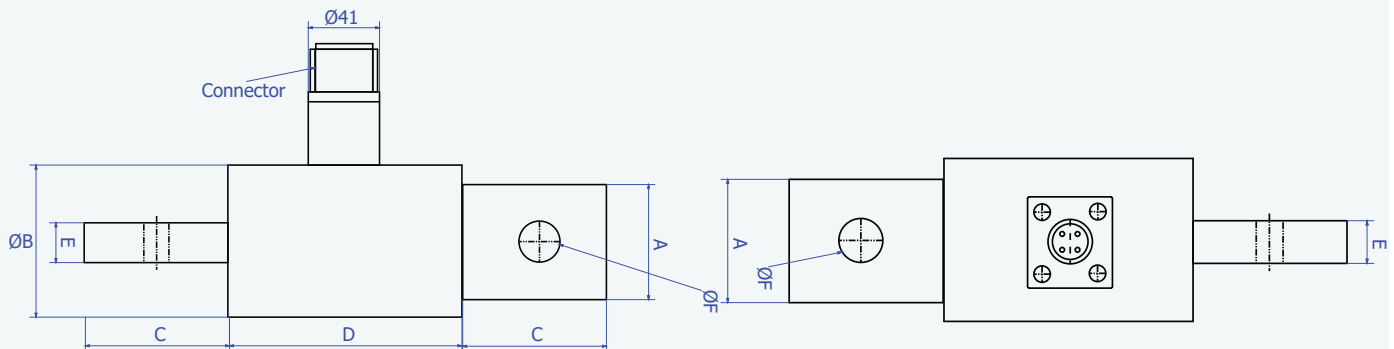


Load cell	All dimensions are in mm									
Capacity	A	B	C	D	E	F	G	h	R	H
500 Kg										
1 Tonne	98	110	45	60	10.5	80	12	7.5	13	12
2 Tonne										
3 Tonne										
5 Tonne										
8 Tonne	98	93	45	60	10.5	80	12	7.5	13	12
10 Tonne										

COLUMN CELLS FOR TENSION LOADS



TENSION LOAD CELLS (DRAWING)

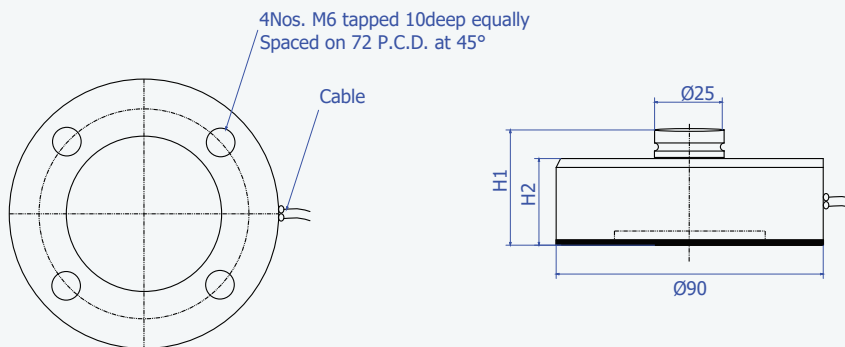


Load cell	All dimensions are in mm					
Capacity	A	B	C	D	E	F
500 Kg	12.5	38	60	66	8.5	54
1 Tonne	12.5	38	60	66	8.5	54
2 Tonne	15	38	60	66	8.5	54
5 Tonne	20	38	60	66	8.5	54
10 Tonne	30	60	90	95	11.0	80
20 Tonne	40	60	90	95	11.0	80
50 Tonne	65	88	120	130	13.0	110
100 Tonne	95	128	155	180	13.0	155

4200 SERIES BUTTON TYPE FOR COMPRESSION LOADS

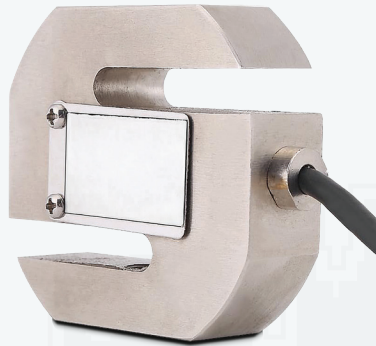


COLUMN CELLS (DRAWING)



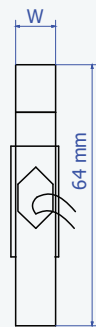
Load cell	All dimensions are in mm	
Capacity	H1	H2
1 Tonne	45	33
2 Tonne	46	34
5 Tonne	48.5	36.5

4000 SERIES S-TYPE CELLS FOR UNIVERSAL LOADS

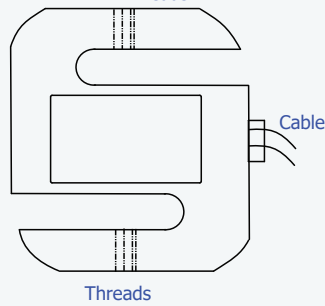


COLUMN CELLS (DRAWING)

Drawing 1



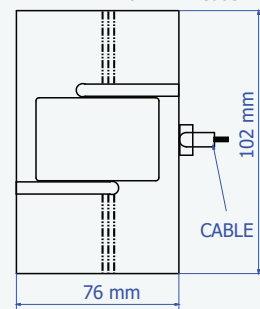
Threads



Drawing 2



M16x2P Threads



Load cell	All dimensions are in mm		
Capacity	W	THREAD T	Drg. No.
5kg	12	M8x1.25P	1
10kg	12	M8x1.25P	1
20kg	12	M8x1.25P	1
50kg	12	M8x1.25P	1
100kg	12	M8x1.25P	1
200kg	20	M12x1.25P	1
500kg	20	M12x1.25P	1
1000kg	35	M16x2.OP	2
2000kg	35	M16x2.OP	2
5000kg	35	M24x2.OP	2

Let's Connect!



Revolutionize Your Industry Today

Abha has experts who can design and execute testing protocols that are accurate, efficient, and effective, providing valuable insights to improve your product's performance. With Exeliq, you can take your testing to the next level and achieve better results than ever before. So don't wait, revolutionize your testing today with Abha's cutting-edge Testing Solutions.



Phone :
+91-9540936810



Email :
info@abhatechsolutions.com



Address :
Abha Tech Solutions LLP,
Registered Office: 1104, SG Oasis, Vasundhara, Sector 2B, Ghaziabad,
Uttar Pradesh-201012



Website :
www.abhasolutions.com